

SUPER FAST REPRODUCTION

MINI QUILT

24" x 24"

Finished block size

4"

SUPPLIES.

Fabric reproduction in small prints.

6 each ¼ meter in different colors

¼ meter blue

Backing and batting 30" x 30"

Binding 2 pieces 2,5" x WOF.

Cutting.

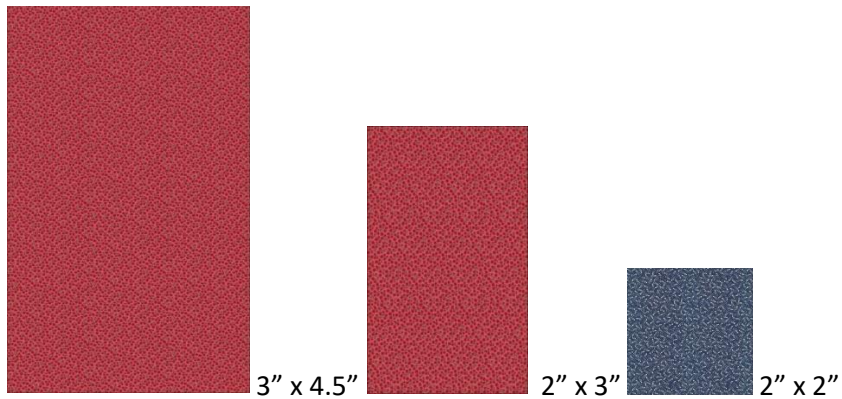
From each of the 6 reproduction fabrics cut:

6 pieces 3" x 4.5" rectangles

6 pieces 2" x 3" rectangles

From the blue fabric cut:

36 pieces 2" x 2" squares.



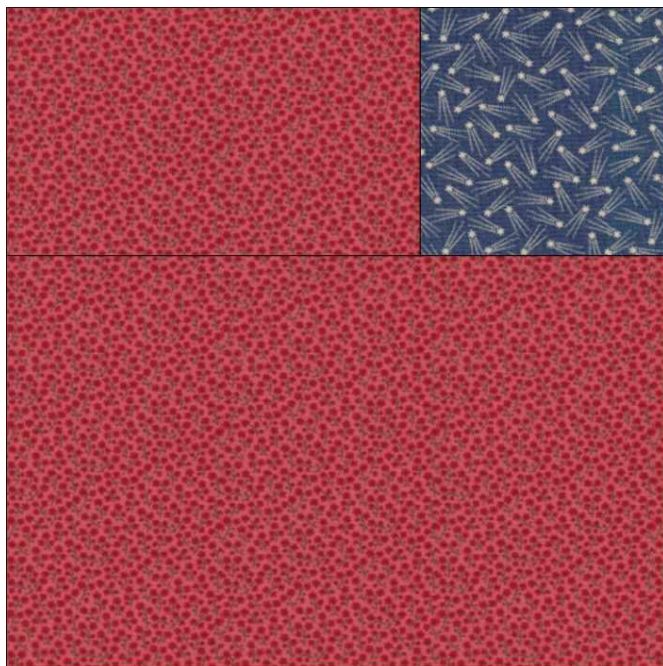
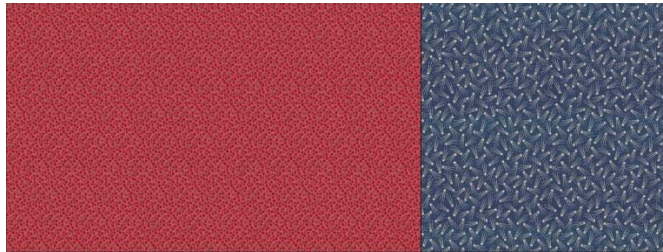
Sewing.

Sew a blue 2" square to a 2" x 3" rectangle, press to the blue square



Sew a matching 3" x 4.5" rectangle to this unit to make the block, press towards the large rectangle.

Unfinished block size 4.5" x 4.5".

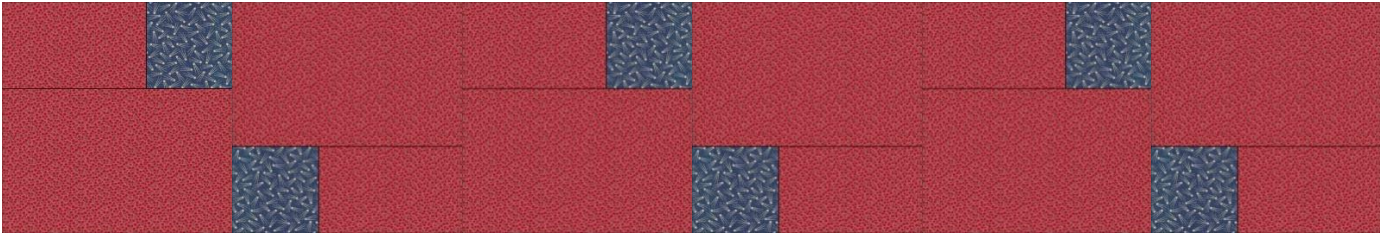
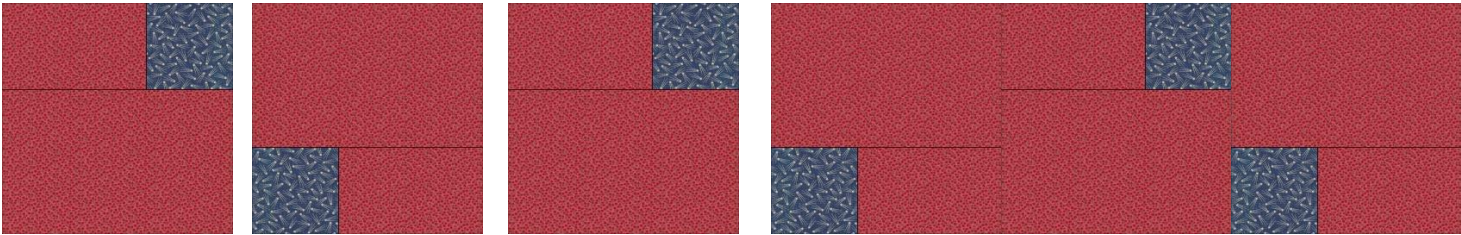


Make 6 from each color, 36 blocks

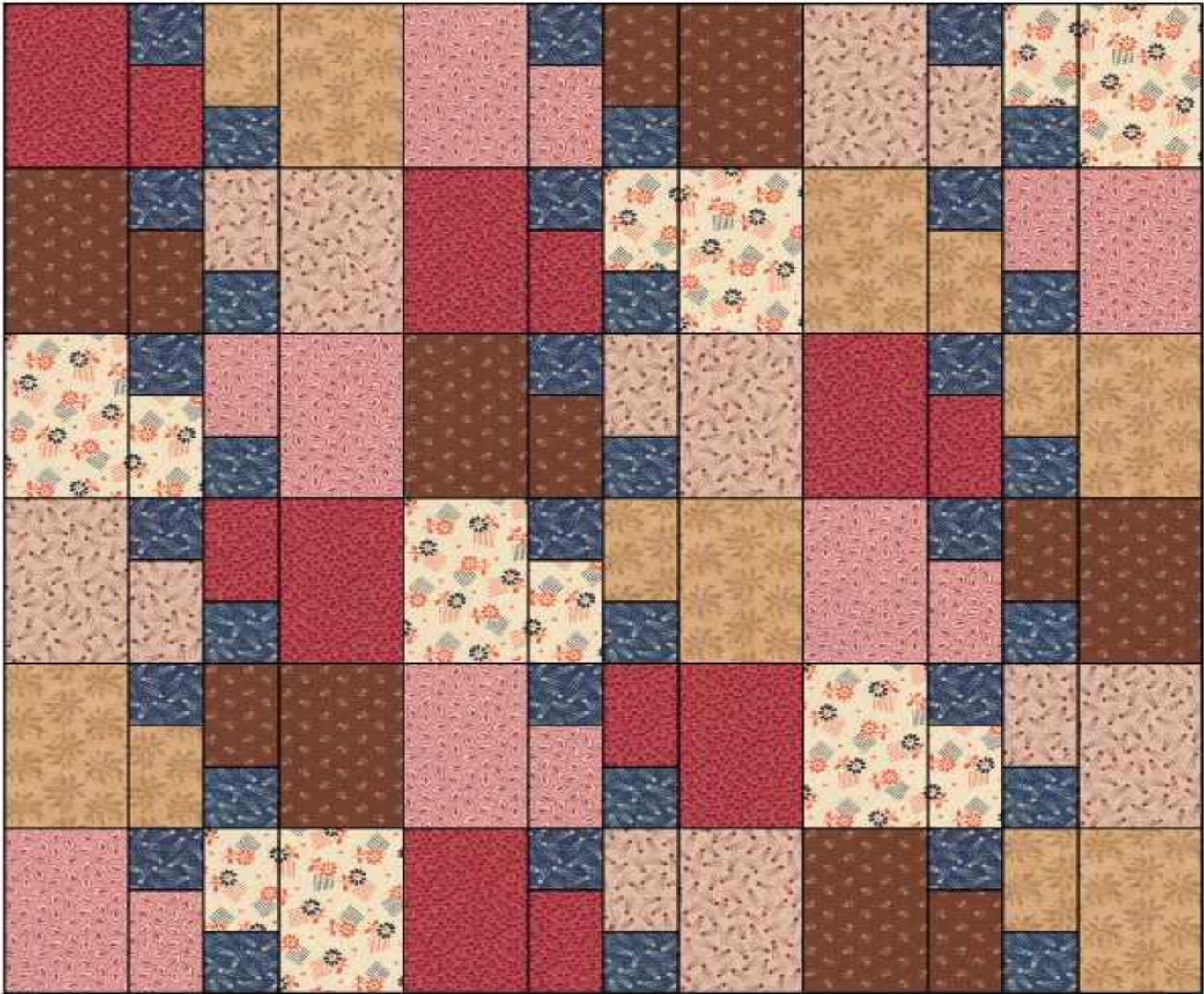
If you would like a scrappier look, use more colors, say 3 of each then you would need 12 colors.

For the scrappiest look use a 5" square for each blocks main color, keeping the blue 2" squares for balance.

Quilt layout and sewing.



Sew the blocks together into 6 rows of 6 blocks, orienting the blocks as shown above.



Finishing.

Layer the quilt top with the batting and the backing, you can use pins or spray baste it. Quilt with a small meander or other free motion design or use your walking foot for some straight line quilting $\frac{1}{4}$ " from the edge of each block. Hand quilting would look lovely and if you have never hand quilted before this would be a great place to start. You can find lots of tutorials on YouTube.

Trim the excess batting and backing and bind the quilt with the 2.5".



